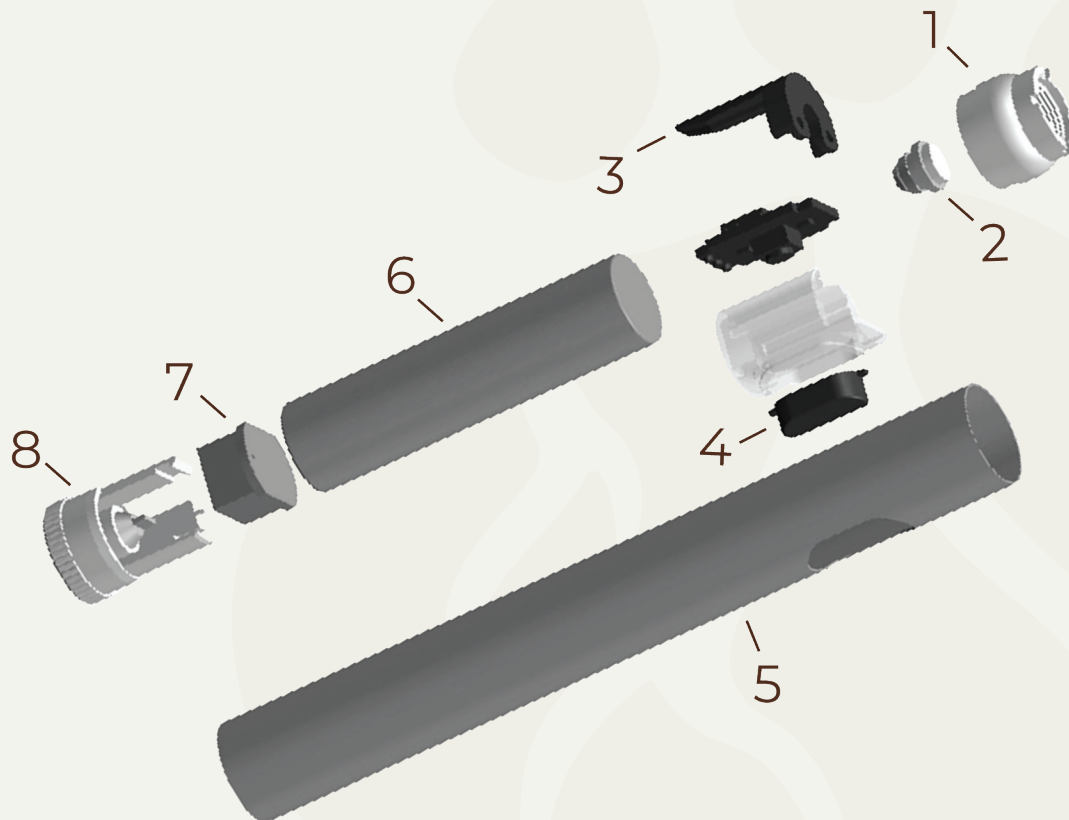


DIAGRAMS: LOTUS BATTERY



1	510 Threading	3	Button Holder	5	Battery Tube	7	PCB
2	Electrode	4	Button	6	Battery Coil	8	Adjustable End Cap

The **Lotus Battery** comes in a slim, discreet design that is easily storable in a pocket or bag. This battery is **button-activated** and has three temperature settings that can be changed by twisting the bottom of the pen. This feature takes the guesswork out of setting **custom voltages**.

The **variable voltage** settings ranging from **3.3 volts up to 4.8 volts**, allowing for more variation in the types of oils and live resins used in the cartridges that are paired with the Lotus Battery. The Lotus battery comes with a USB charge head that screws directly into the top of the battery using the 510 thread port designed for cartridges. Safety features such as an auto-off after 15 seconds of static time and overcharge protection are what make the battery safe and easy for everyday use!

BEAR ROOTZ

